

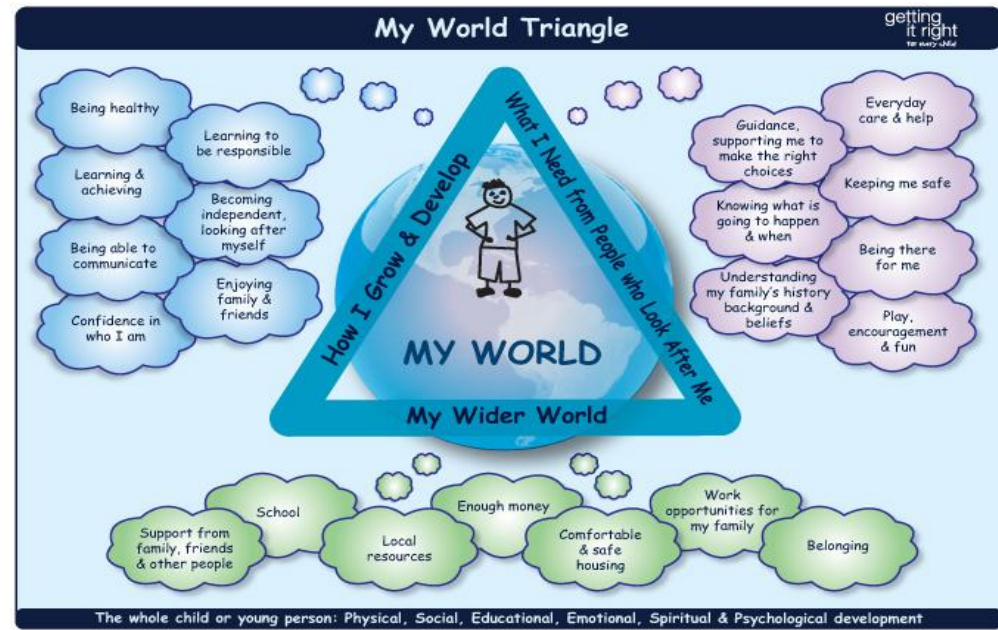
National Risk Framework 2012 - Generic Risk Indicators

R - Relevant
This should be used when the risk indicator is thought to be known or **to have relevance** to the child, the parent/carer and in relation to the child's wider world

NR - Not Relevant
This should be used when the risk indicator is thought or known **not to be relevant** to the child, the parent/carer and in relation to the child's wider world

N/K - Not Known
This should be used where information is insufficient or **not known**. A decision needs to be made whether this information requires to be obtained.

| Generic Indicators - The Child | Child 1 | Child 2 | Child 3 | Child 4 | Notes |
|--|---------|---------|---------|---------|-------|
| Premature birth/low birth weight | | | | | |
| Early prolonged separation at birth | | | | | |
| Baby born with substance withdrawal (NAS) | | | | | |
| Very young - highly dependent (birth - 5 years) | | | | | |
| Cries frequently, difficult to comfort | | | | | |
| Difficulties in feeding/toileting | | | | | |
| Periods of separation from parent/primary caregiver | | | | | |
| Adopted or step-child | | | | | |
| Fostered | | | | | |
| Child developmental delay | | | | | |
| Child mental health difficulties | | | | | |
| Child learning disabilities | | | | | |
| Child behavioural difficulties | | | | | |
| Difficult temperament | | | | | |
| Health issues requiring ongoing medical treatment | | | | | |
| Engaging in self-harm | | | | | |
| Involved in substance misuse | | | | | |
| Anti-social behaviour/relationships | | | | | |
| Involved in offending | | | | | |
| Evidence of sexually inappropriate behaviour | | | | | |
| Poor relationship with parents | | | | | |
| Fearful of parent/caregiver | | | | | |
| Outwith parental control | | | | | |
| Child not seen by or given chance to talk to workers | | | | | |
| Contested contact and residence issues | | | | | |
| Repeat victim | | | | | |
| Historical abuse of siblings by carers | | | | | |
| Direct or indirect exposure to domestic abuse | | | | | |
| Statutory or CP measures in place | | | | | |
| Poor school attendance | | | | | |
| Young carer | | | | | |
| English is not first language of child | | | | | |
| More than 4 children in the family | | | | | |



| Generic Indicators - Wider World | Child 1 | Child 2 | Child 3 | Child 4 | Notes |
|---|---------|---------|---------|---------|-------|
| Family socially isolated | | | | | |
| Absence of social supports/networks | | | | | |
| Problems within extended family | | | | | |
| Illness within extended family | | | | | |
| Conflict within extended family | | | | | |
| Substance misuse within extended family | | | | | |
| Family - frequent changes of address | | | | | |
| Home environment chaotic, unsafe | | | | | |
| Concerns about sleeping arrangements | | | | | |
| Family history of poor engagement with services | | | | | |
| Discriminated within community victim/perpetrator | | | | | |
| Culturally inappropriate behaviours | | | | | |
| Neighbourhood characterised by offending/violence | | | | | |
| Neighbourhood characterised by poverty | | | | | |
| Housing quality poor | | | | | |
| Lack of community services | | | | | |

| Generic Indicators - Parent/Carer | Child 1 | Child 2 | Child 3 | Child 4 | Notes |
|--|---------|---------|---------|---------|-------|
| Parent under 21 years | | | | | |
| Poor parenting skills | | | | | |
| Poor understanding of child's needs | | | | | |
| Lack of empathy | | | | | |
| Unrealistic expectations of child (age & stage) | | | | | |
| Unable and/or unwilling to meet child's needs | | | | | |
| Poor attachment | | | | | |
| Evidence of rejection towards the child | | | | | |
| Lack of interest in child | | | | | |
| Threats/requests to have the child accommodated | | | | | |
| Child perceived as difficult and/or labelled by parent | | | | | |
| Prioritises adult needs over child's | | | | | |
| Inappropriate rigid attitudes towards child | | | | | |
| Partner is not biological parent of child | | | | | |
| New partner - background is unknown | | | | | |
| Parental resistance/limited engagement | | | | | |
| Refuses workers access to child | | | | | |
| Parents masking the reality of the situation | | | | | |
| No shared understanding of concerns | | | | | |
| Child's account minimised/not believed by carer | | | | | |
| Physical illness which impairs parenting ability | | | | | |
| Mental illness which impairs parenting ability | | | | | |
| Substance misuse which impairs parenting ability | | | | | |
| High stress levels such as poverty, isolation, loss | | | | | |
| Parents' parenting was poor/abusive | | | | | |
| Low self-esteem | | | | | |
| Poor life skills and problem solving abilities | | | | | |
| Poor impulse control | | | | | |
| Difficulty with communication | | | | | |
| Lack of trust towards workers and others | | | | | |
| History of multiple relationships | | | | | |
| Carer continually defers to partner for response | | | | | |
| History of domestic violence | | | | | |
| History of community violence | | | | | |
| History of violence/aggression towards workers | | | | | |
| Parents in conflict over custody or residence | | | | | |
| Inability/unwillingness to make use of supports | | | | | |
| Breaches of legal orders/agreement - criminal/civil | | | | | |

What is the information telling me?

1. Consider the information gathered and identify the key risk factors for child, parent/carer and wider world. The Record Sheets will highlight the specific areas of concern/risk (your evidence but you should give an overview of what you consider to be the key issues within the three domains)

2. You then need to form a view as to the level of risk for the child, taking account of the interaction between the child, the parent/carer and the child's wider world. What is the information telling you about the level of concern/risk? (Consider frequency, duration, severity, single or accumulative in nature - significance of factors in reaching a conclusion about the level of risk.)

Risk Indicators for:

Child 1:

Child 2:

Child 3:

Child 4:

Parent/Carer

Family and Wider World

Tool adapted from the National Risk Framework 2012 by Alex Honeyman, Argyll & Bute Child Protection Committee & Susanne Geotzold, Edinburgh Napier University 2018